



MSc in Official Statistics

Statistical Computing:

Example of PFFPS

The Pakistan Fertility and Family Planning Survey, 1997

Andrew Westlake

Survey & Statistical Computing

63 Ridge Road, London N8 9NP, UK

+44 (0) 20 8374 4723

AJW@SaSC.co.uk (E-Mail)

www.SaSC.co.uk

PFFPS

- Clustered, stratified sample of households
- Fixed size random selection of households within cluster (HID)
- List all household members (HHM)
- Further interview for all married women aged 15 to 49 (WID)
 - » Includes listing of all live births
 - » Further details for births in last three years
 - » Knowledge and use of 11 contraceptive methods
- Some information in Background notes
 - » Full Dictionary in Samples directory, with sample data

PFFPS - Main structure

Weights	
PK	Cluster
	Weight

PFFPSHID	
PK,FK1,I1 PK	CLUSTER H_NO
	RECORD_TYP
	PROVINCE
	AREA
	DISTRICT
	VISIT
	F_DAY
	F_MON
	F_YEA
	INTERVIEW
	SUPERVISOR
	DEO
	RESULT
	Q16T
	Q16M
	Q16F
	Q17
	Q18
	Q19
	Q20
	Q21
	Q22
	Q23_1
	Q23_2
	Q23_3
	Q23_4
	Q23_5
	Q23_6
	Q23_7
	Q23_8
	Q24
	Q25_1
	Q25_2
	Q25_3
	Q25_4
	Q26
	Q27

PFFPSHHM	
PK,FK1,I1 PK,FK1,I1 PK	CLUST_HHM H_NO_HHM Q01
	RECORD_TYP
	PROV_HHM
	AREA_HHM
	Q03
	Q04
	Q05
	Q06
	Q07
	Q08
	Q09
	Q10
	Q11
	Q12
	Q13
	Q14
	Q15

PFFPSWID	
PK,FK1 PK,FK1 PK,FK1	CLUST_HHM H_NO_HHM Q01
	RECORD_TYP
I10	PROV_WID
I1	AREA_WID
I9	LINE_WID
I3	DIST_WID
I4	F_DAY_WID
I5	F_MON_WID
I6	F_YEA_WID
I11	VISIT_WID
	WOM_RES
	Q101H
	Q101M
	Q102
	Q103
	Q104
	Q105M
	Q105Y
	Q106
	Q107
	Q108L
	Q108C
	Q109
	Q110
	Q111
	Q112
	Q113
	Q114
	Q115
	Q201
	Q202
	Q203S
	Q203D
	Q204
	Q205S
	Q205D
	Q206
	Q207S
	Q207D
	Q208
	Q210
	Q218
	Q219
	Q220
	Q221
	Q222
	Q223
	Q224
	Q225_1
	Q225_2
	Q225_3
	Q225_4
	Q225_5
	Q225_6
	Q225_7
	Q226
	Q227
	Interview CMC
	Birth CMC



Demonstration

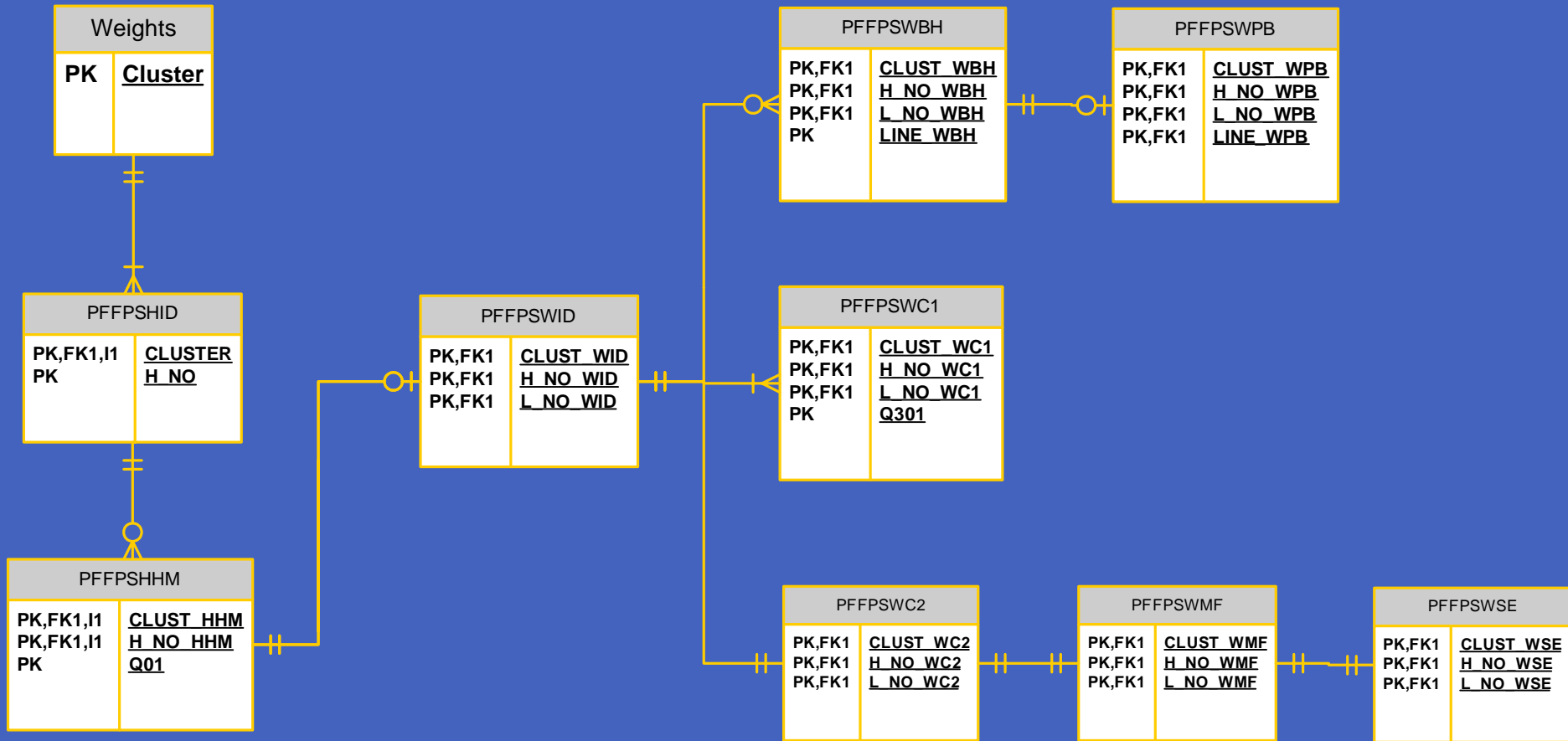
- PFFPS in MS Access



PFFPS Table Design

- Some choices from the survey structure
 - » Cluster, Household, Member, Interviewed woman, Births, Pregnancy details
- Others are based on pragmatic choices
 - » Contraceptive Knowledge
 - Always 11 records, one for each method, 4 substantive variables
 - Could be one record of 33 variables
- Or system limitations
 - » Current use, Preferences and Background
 - » Follows questionnaire structure, because of software limits to record size

Data Tables for PFFPS



PFFPS - Keys

- Primary and Foreign key structure follows logical structure
- Appropriate identifier values copied from parent records at data entry
- Field names distinguished because data entry software required this
- Preferred option is the Global Relation
 - » Same name is used in different tables for the same information



Demonstration

- Entities in Visio
 - » Household and Members

