



MSc in Official Statistics
Statistical Computing:
PHLS HIV and AIDS
Processing System

Andrew Westlake

Survey & Statistical Computing

63 Ridge Road, London N8 9NP, UK

+44 (0) 20 8374 4723

AJW@SaSC.co.uk (E-Mail)

www.SaSC.co.uk

HIV and AIDS reporting section, PHLS

- Redesign of processing and reporting system
- Old system (1994) based on files processed with Epi-Info and Aspect database
- Requirements
 - » Simplify management of data
 - » Improve consistency
 - » Simplify regular reporting
 - » Enable ad hoc reporting
- All done 10 years ago - but was still in use last year



Old System

- **Input Notifications**

- » HIV Tests (standard form)
- » AIDS Diagnosis (standard)
- » ONS Death Reports
- Some notifications on disc, most on paper

- **Data Storage**

- » Separate HIV and AIDS files
- » Deaths Added

- **Reporting**

- » Quarterly standard reports
- » Ad Hoc inquiries (e.g. PQs)
- » Occasional in-depth analysis

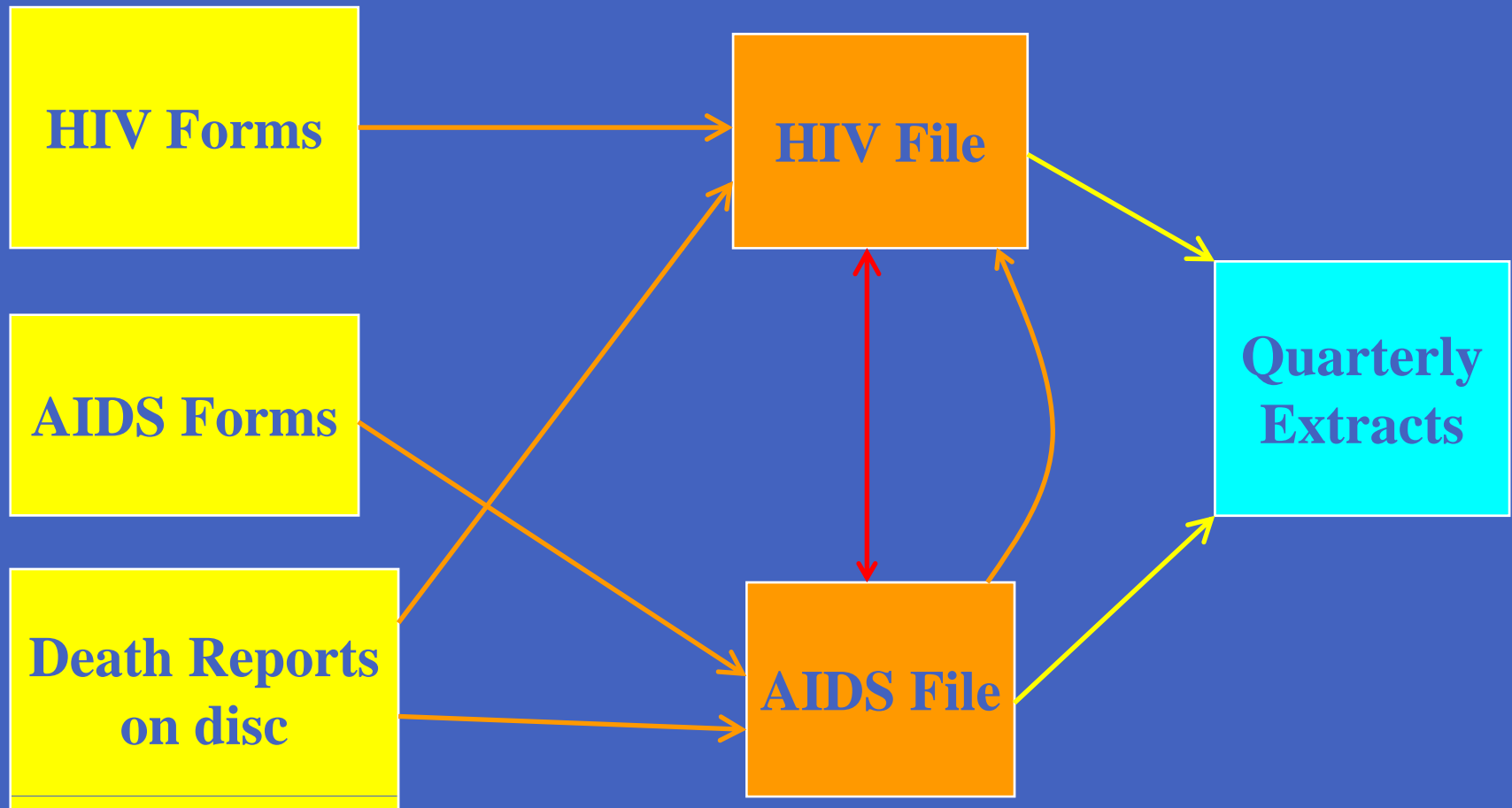
- **Processes**

- » Continuous Data Entry from paper
- » Regular Linking for reporting extractions
- » Occasional Matching within and between files

- **Problems**

- » Duplicates and omissions
- » Name matching
- » Repeated linking

Old Structure



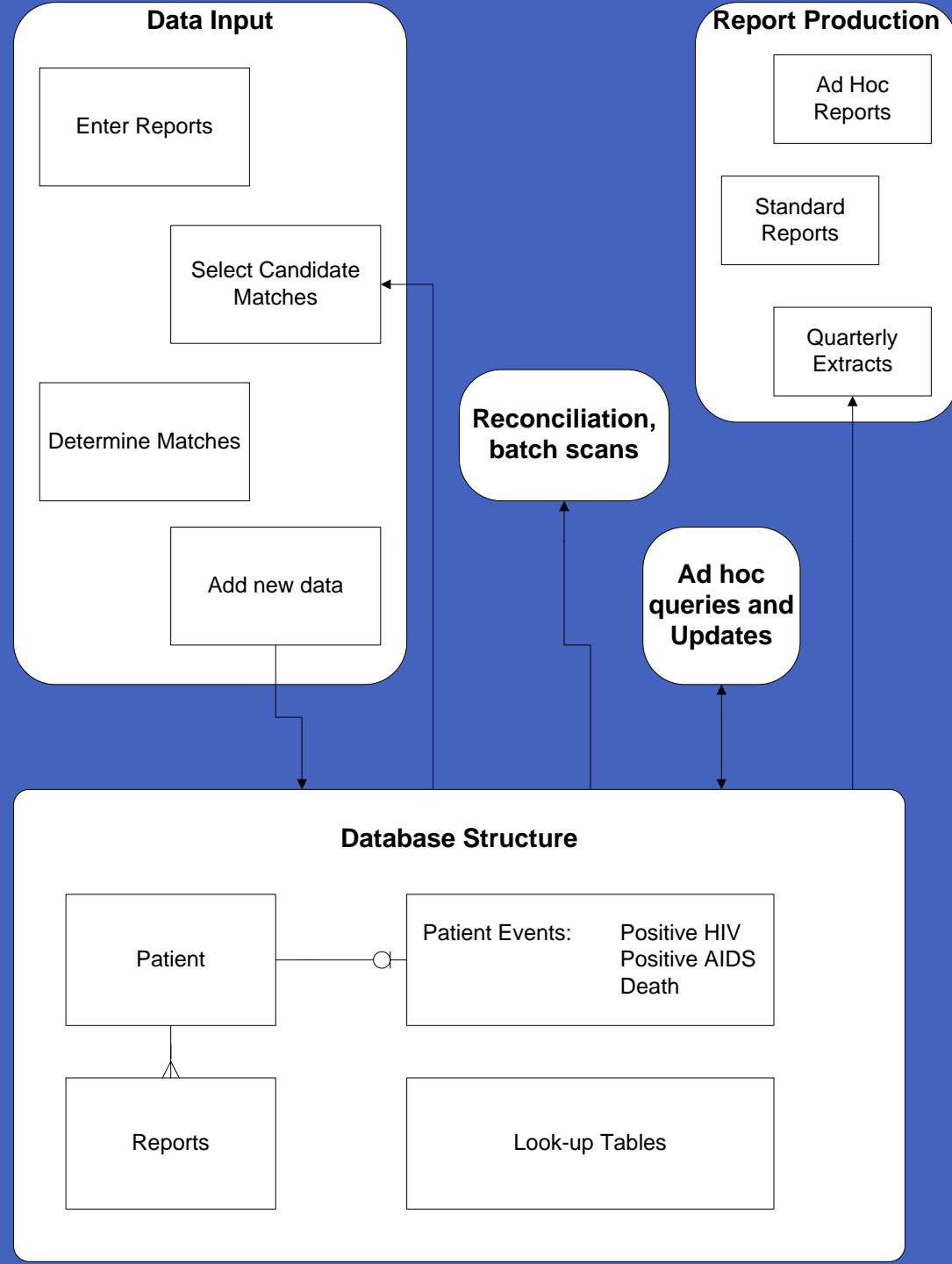
Suggestions for Improvement

- Structure
 - » E-R in Visio
- Processing
 - » DFD in Visio



Initial Thoughts

- Abstraction approach
 - » What are the main components
- Unified database structure
- Focus on Patients
- Do matching once, at initial entry
- Additional components for metadata, auditing
- Extracts to separate reporting system



Full system

Overall Structure

Notification Processing

Metadata System

Patient Data

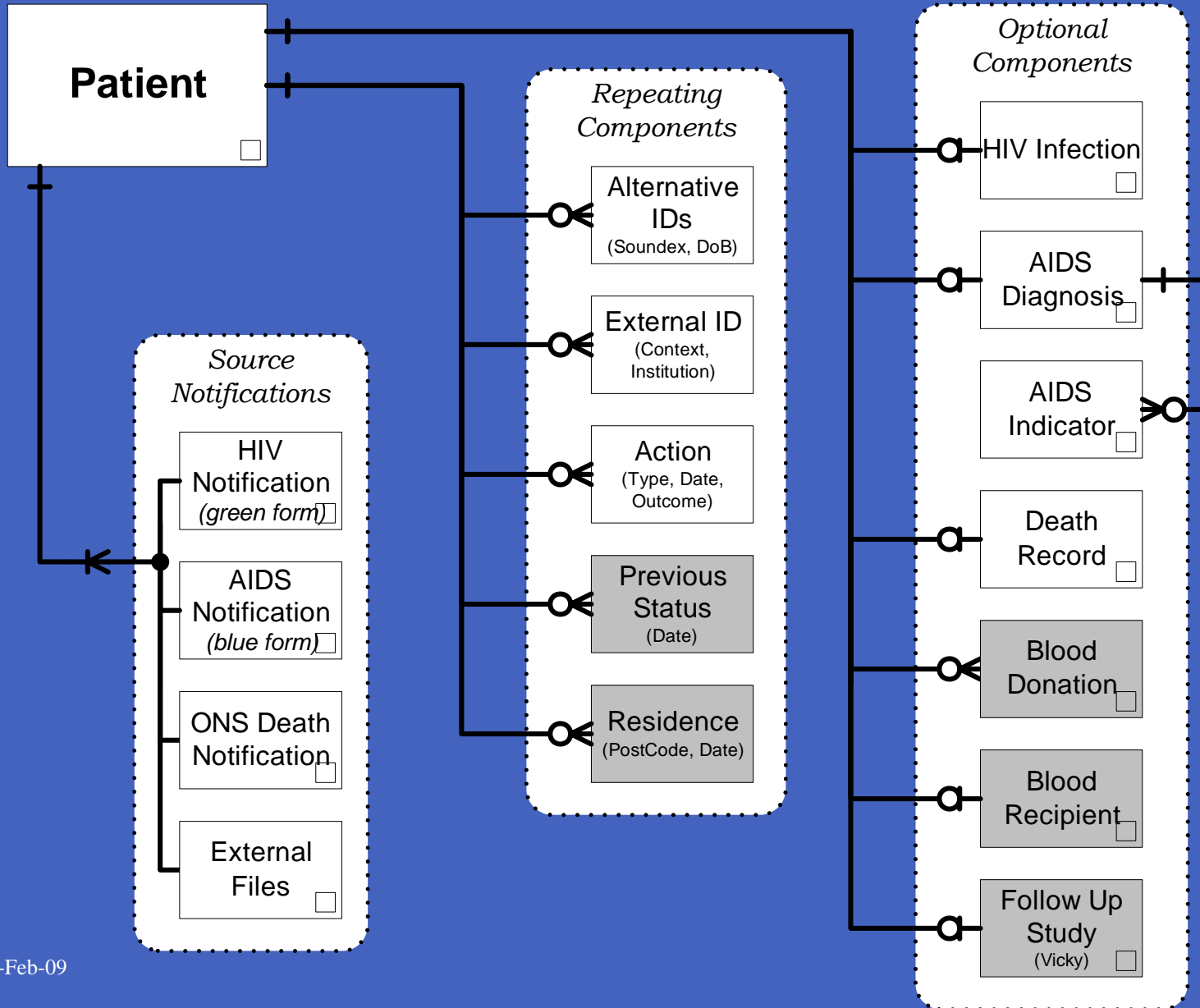
External Organisation

Reporting Facilities

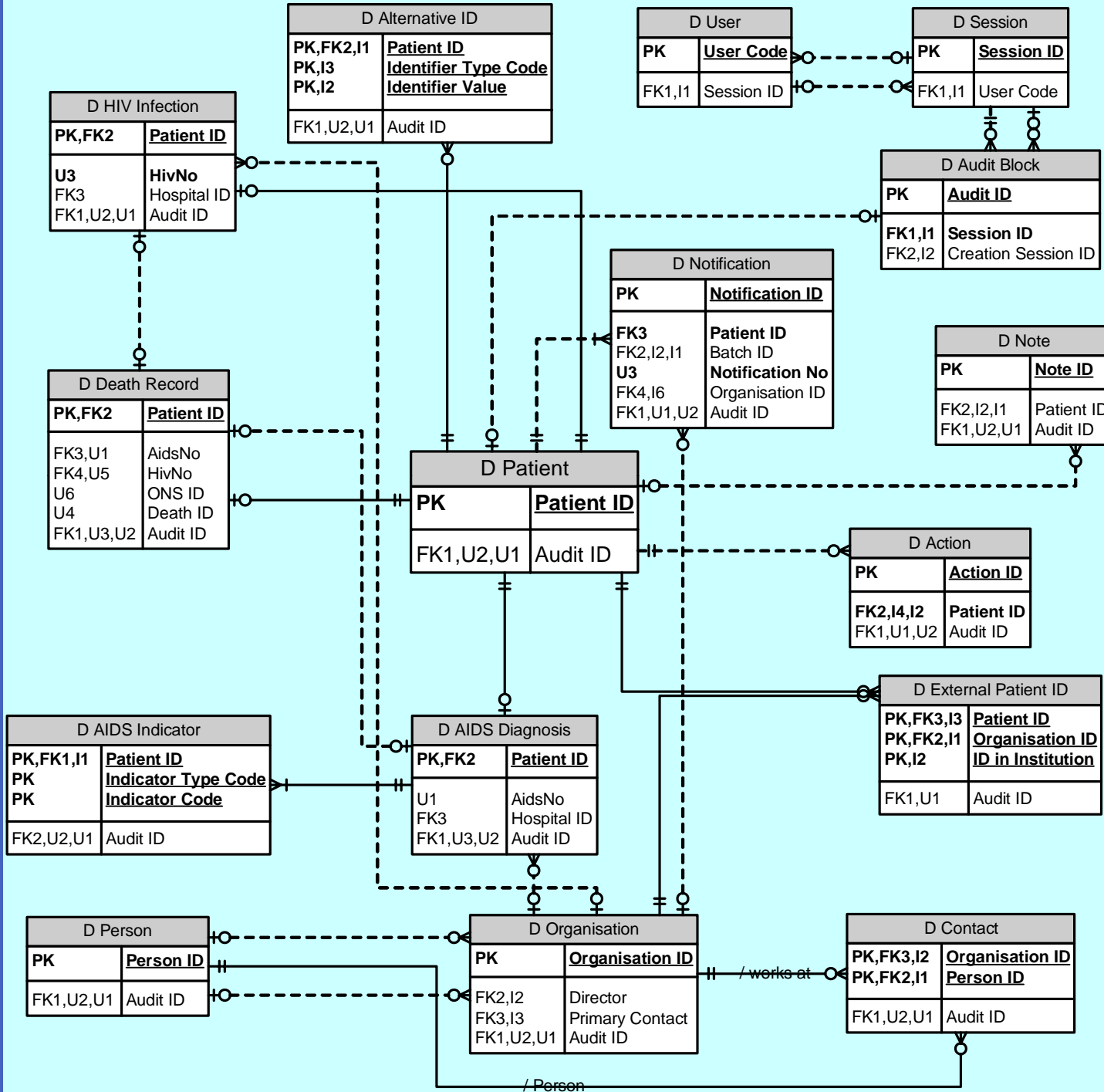
Auditing System



Patients and Notifications

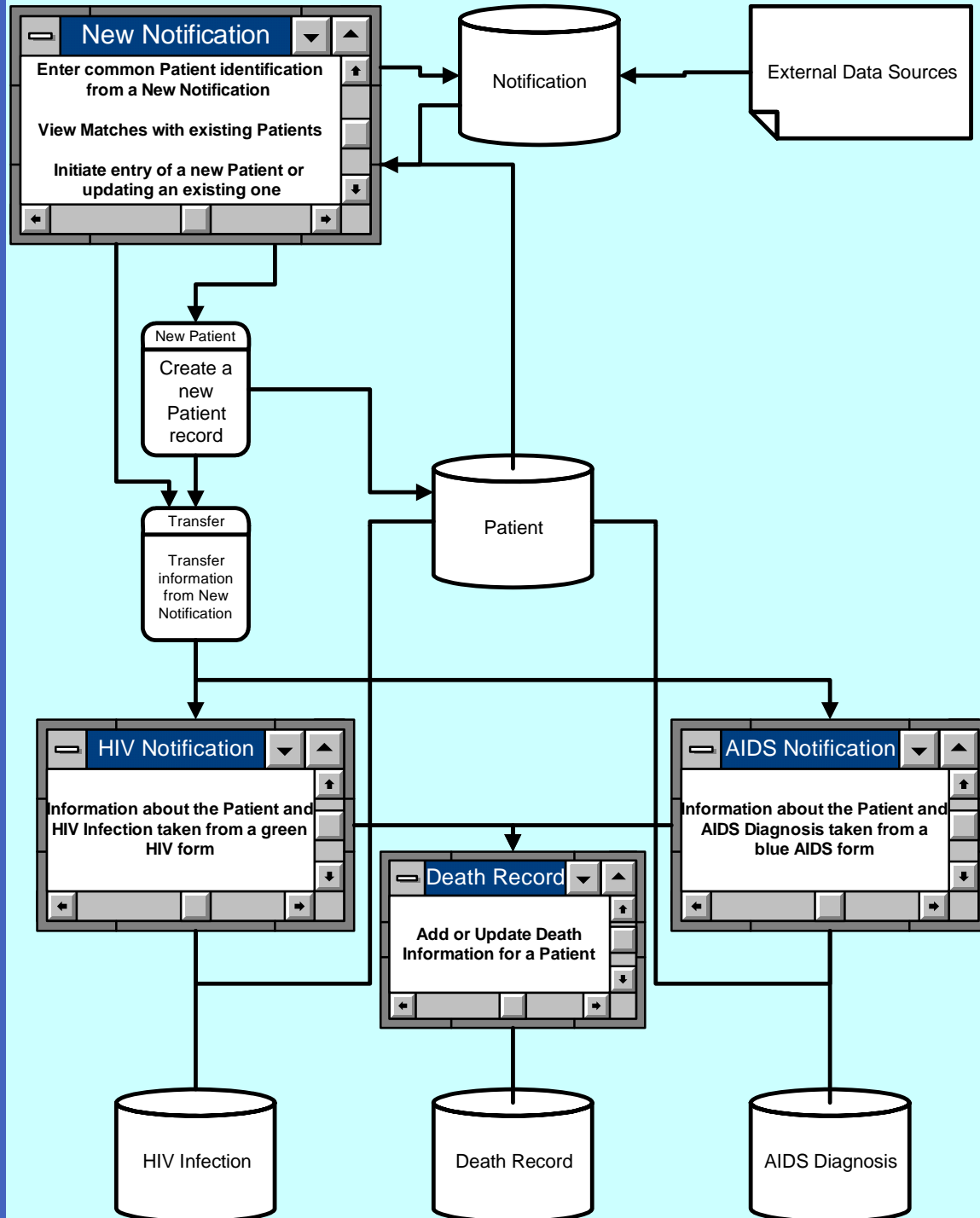


Full HAP Data Structure



Data Entry

- Get Patient details from source
- Look for matching existing patients
 - » May need expert to decide
 - » Create new Patient if needed
- Open appropriate form for source to complete transfer of Patient and details
- Forms know how to handle duplicates (generally take earliest)



Extraction for Quarterly Reporting

- Separate Extraction Database template
 - » Linked to main database
 - » Set of associated Excel spreadsheet templates
- New copy each quarter
 - » Populate by Extraction of information
 - » Snapshot of Patient status - available for re-analysis
- Set of aggregation queries
 - » Copy results into spreadsheets as source
- Reorganise with Pivot tables
 - » Create publication versions

Summary

- Old system based on data sources
 - » No analysis of usage requirements
- Need to think about underlying entities and processes
- Initial removal of redundancy makes later processing more efficient
- Data store continually updated
 - » Need snapshots for repeatable analysis
- What could be different now?

